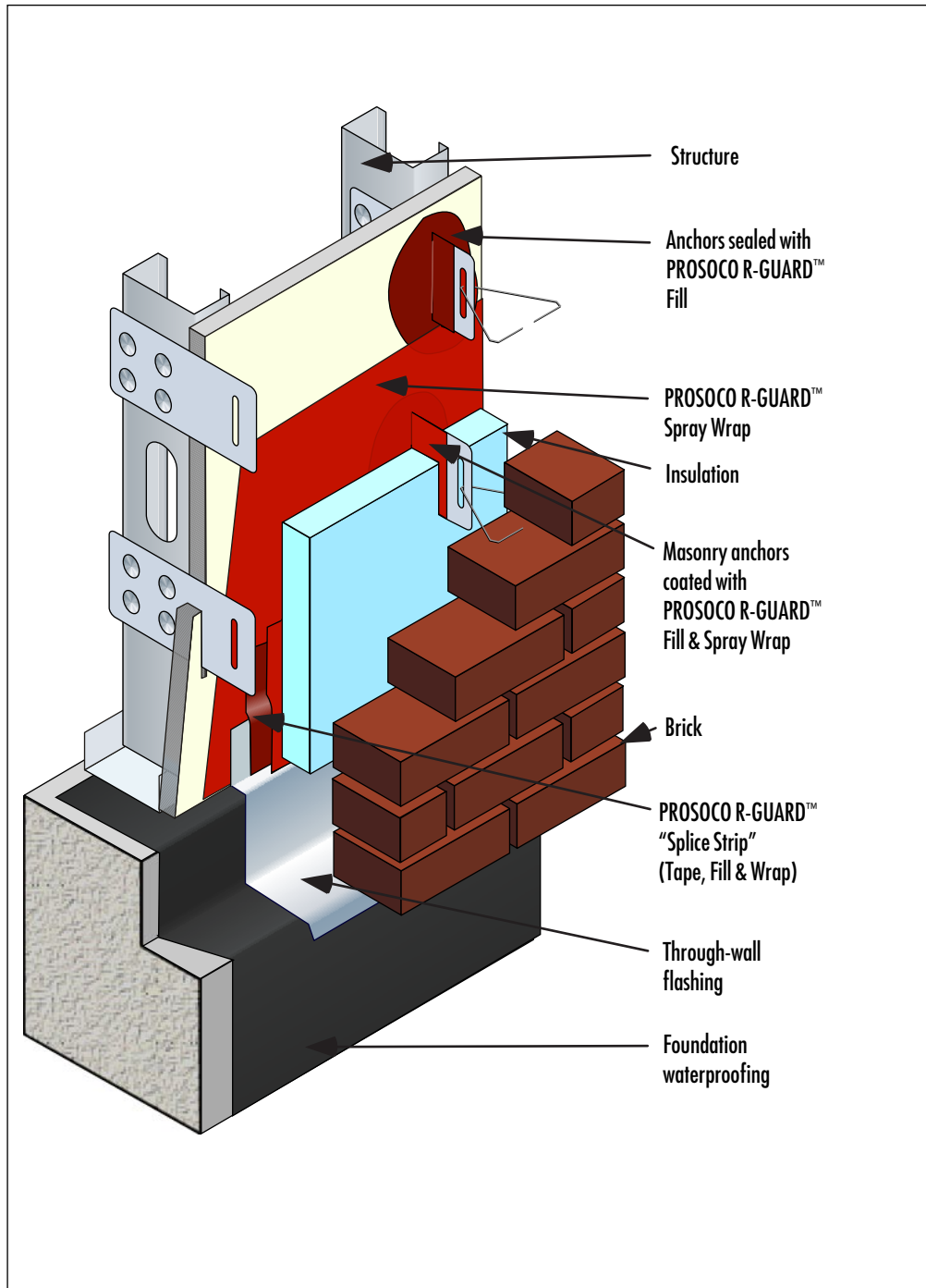


**PROSOCO R-GUARD™ Air & Moisture Barrier**  
**Steel Frame with Brick Veneer**

**Detail No.: 20.00d**



**Notes:**

This installation shows masonry anchors fastened to steel studs and penetrating through the wall sheathing.

- 1] Install PROSOCO R-GUARD™ as per PROSOCO specifications. Reinforce penetrations that create a gap through the wall sheathing that exceed 1/8" (3mm) with PROSOCO R-GUARD™ Tape. Apply PROSOCO R-GUARD™ Fill to create an air seal around the masonry anchor.
- 2] Install flashing. Integrate the flashing with a "splice strip" of PROSOCO R-GUARD™ by overlapping the upper edge of flashing with PROSOCO R-GUARD™ Tape & Fill and overcoat with PROSOCO R-GUARD™ Spray Wrap.
- 3] Secure masonry anchors as per manufacturer's specifications.