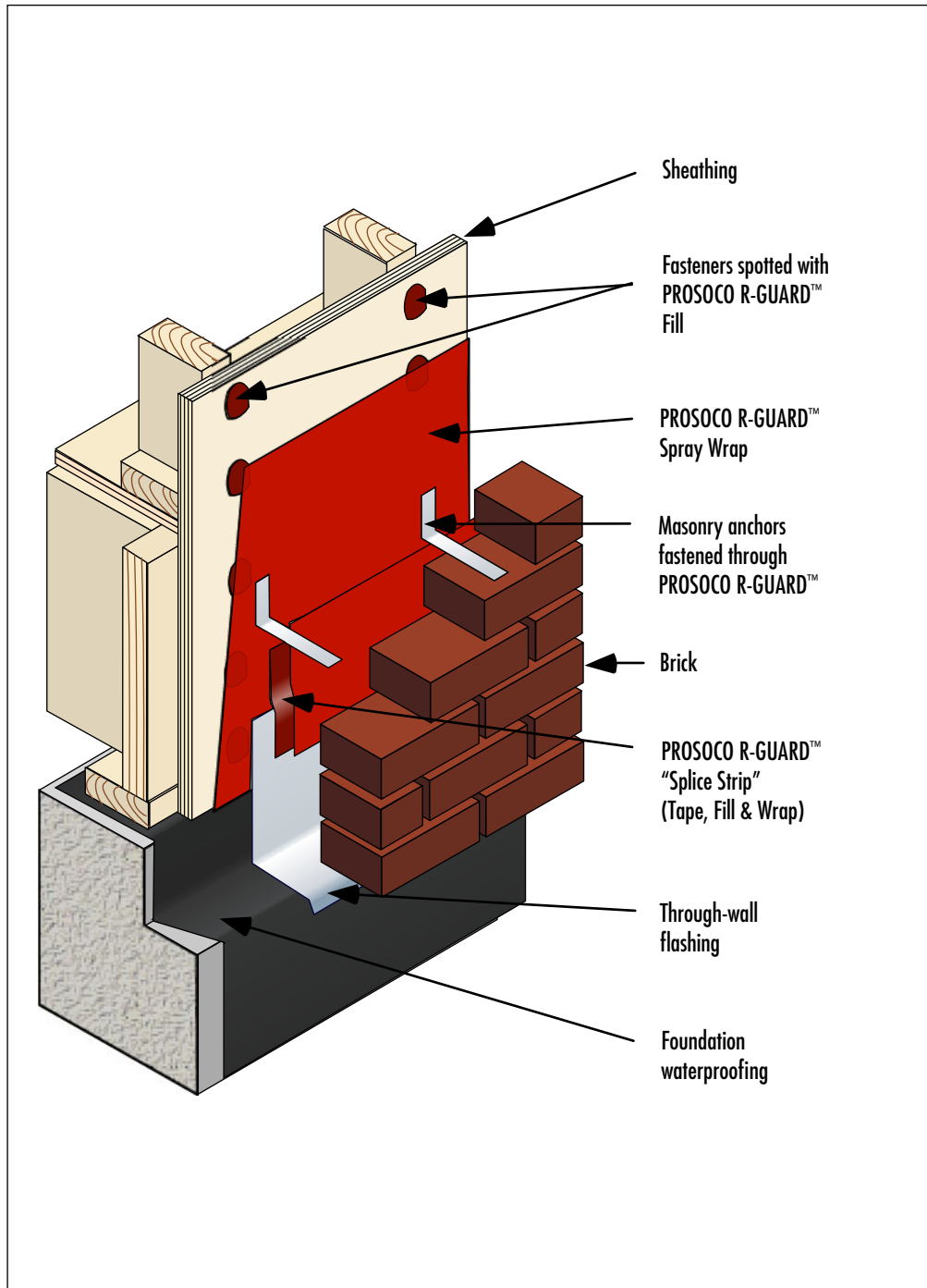


PROSOCO R-GUARD™ Air & Moisture Barrier Wood Frame with Brick Veneer

Detail No.: 20.00e



Notes:

This installation shows masonry anchors that are fastened through PROSOCO R-GUARD™ Air & Moisture Barrier.

- 1] Install PROSOCO R-GUARD™ as per PROSOCO specifications.
- 2] Install flashing. Integrate the flashing with the PROSOCO R-GUARD™ as per PROSOCO Detail 20.09.
- 3] Secure masonry anchors as per anchor manufacturer's specifications. Refer to PROSOCO Detail 20.03 for alternate installation detail.