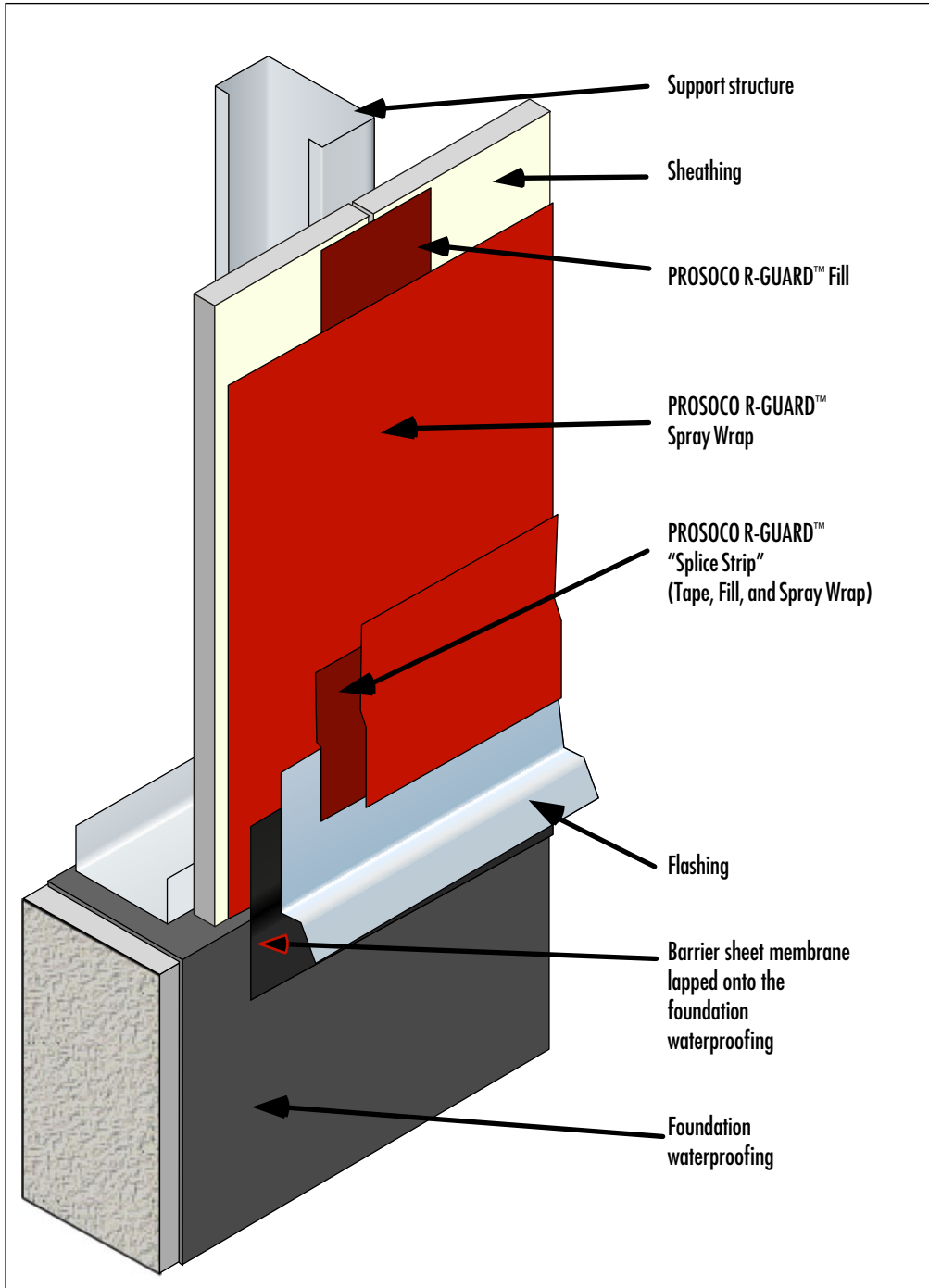


PROSOCO R-GUARD™ Air & Moisture Barrier Termination at Grade-Sheathing Flush with Foundation

PROSOCO
SINCE 1939

Detail No.: 20.10a



Notes:

1. Protect wall assembly from moisture rising through the concrete foundation.
2. Install suitable self-adhering barrier sheet membrane to transition between PROSOCO R-GUARD™ Air & Moisture Barrier and foundation waterproofing.
3. Install flashing to drain liquid water to the exterior of the wall assembly.
4. Install PROSOCO R-GUARD™ "splice strip" to create seamless transition.

PROSOCO details are illustrations of construction. They are guidelines, intended for use by the design/construction professional, to assist in developing project specific details. They should be modified where necessary to accommodate individual project conditions. Refer to appropriate PROSOCO specification for design requirements. Refer to local building code for any special requirements.

www.prosoco.com