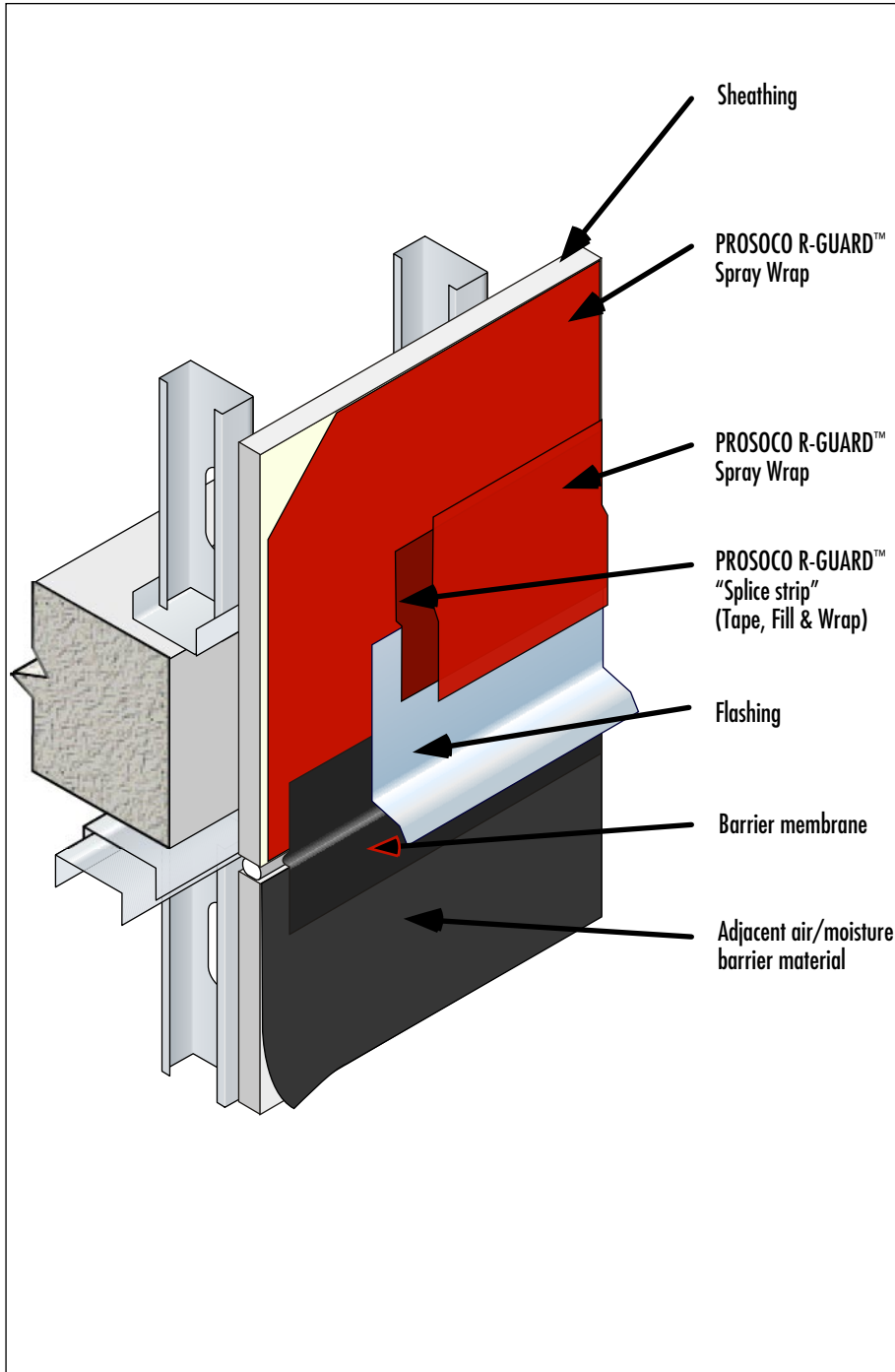


**PROSOCO R-GUARD™ Air & Moisture Barrier
Floor Line Expansion Joint-Connect to
Adjacent System**

Detail No.: 20.51



Notes:

- 1] Provide barrier sheet membrane to connect air and moisture plane of the PROSOCO R-GUARD™ to the adjacent air & moisture barrier.
- 2] Provide flashing to drain any moisture above the change in membranes. Drainage from behind one cladding assembly into another is not recommended.
- 3] Provide PROSOCO R-GUARD™ Tape & Fill over the upper edge of the flashing to ensure moisture is drained onto the flashing and out of the wall assembly. Refer to PROSOCO Detail 20.09.