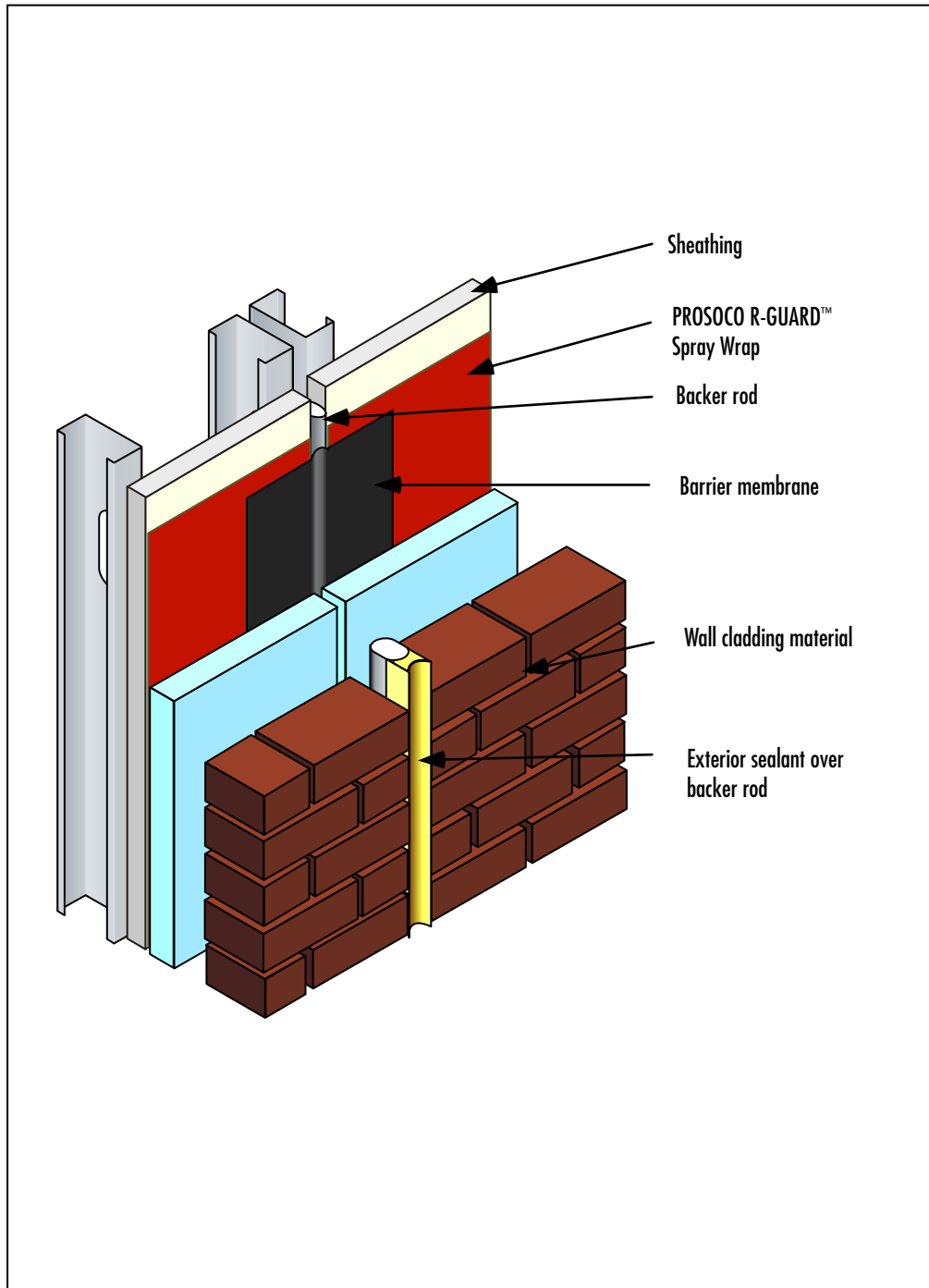


PROSOCO R-GUARD™ Air & Moisture Barrier Expansion Joint

Detail No.: 20.53



Notes:

- 1] Provide barrier sheet membrane to connect the air and moisture plane of the PROSOCO R-GUARD™ Spray Wrap across the joint.
- 2] Install a backer rod in the joint to provide support for the barrier sheet membrane but not restrict its movement.
- 3] Provide exterior sealant over backer rod and weep holes over flashing to direct water that enters the cavity to the exterior of the wall cladding.