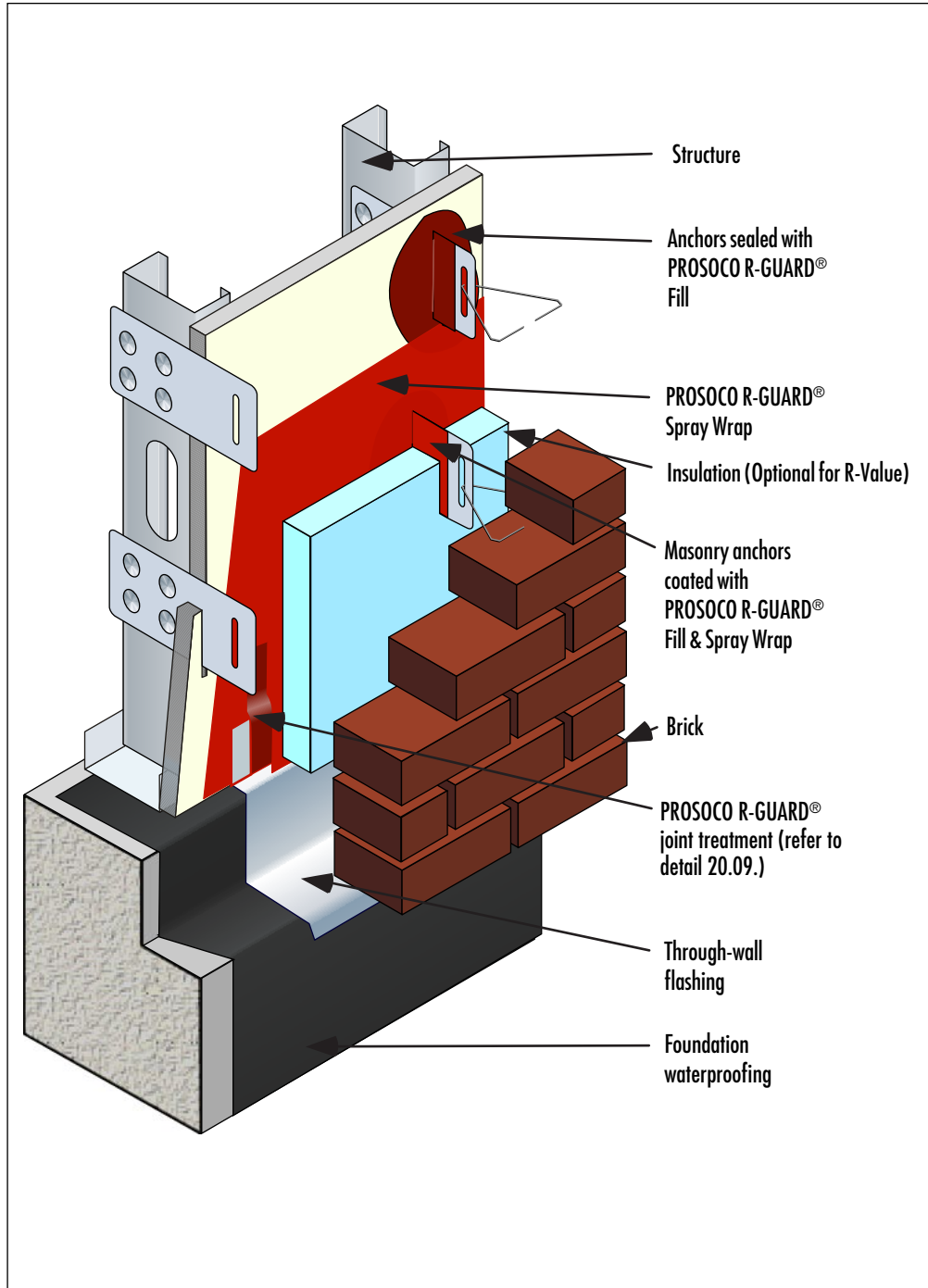


PROSOCO R-GUARD® Air & Water-Resistive Barrier
Steel Frame with Brick Veneer

Detail No.: 20.00d



Notes:

This installation shows masonry anchors fastened to steel studs and penetrating through the wall sheathing.

- 1] Install PROSOCO R-GUARD® as per PROSOCO specifications. Reinforce penetrations that create a gap through the wall sheathing that exceed 1/8" (3mm) with R-GUARD Tape. Apply R-GUARD Fill to create an air seal around the masonry anchor.
- 2] Install flashing. Integrate the flashing with a "splice strip" of PROSOCO R-GUARD® by overlapping the upper edge of flashing with R-GUARD Tape & Fill and overcoat with R-GUARD Spray Wrap.
- 3] Secure masonry anchors as per manufacturer's specifications.