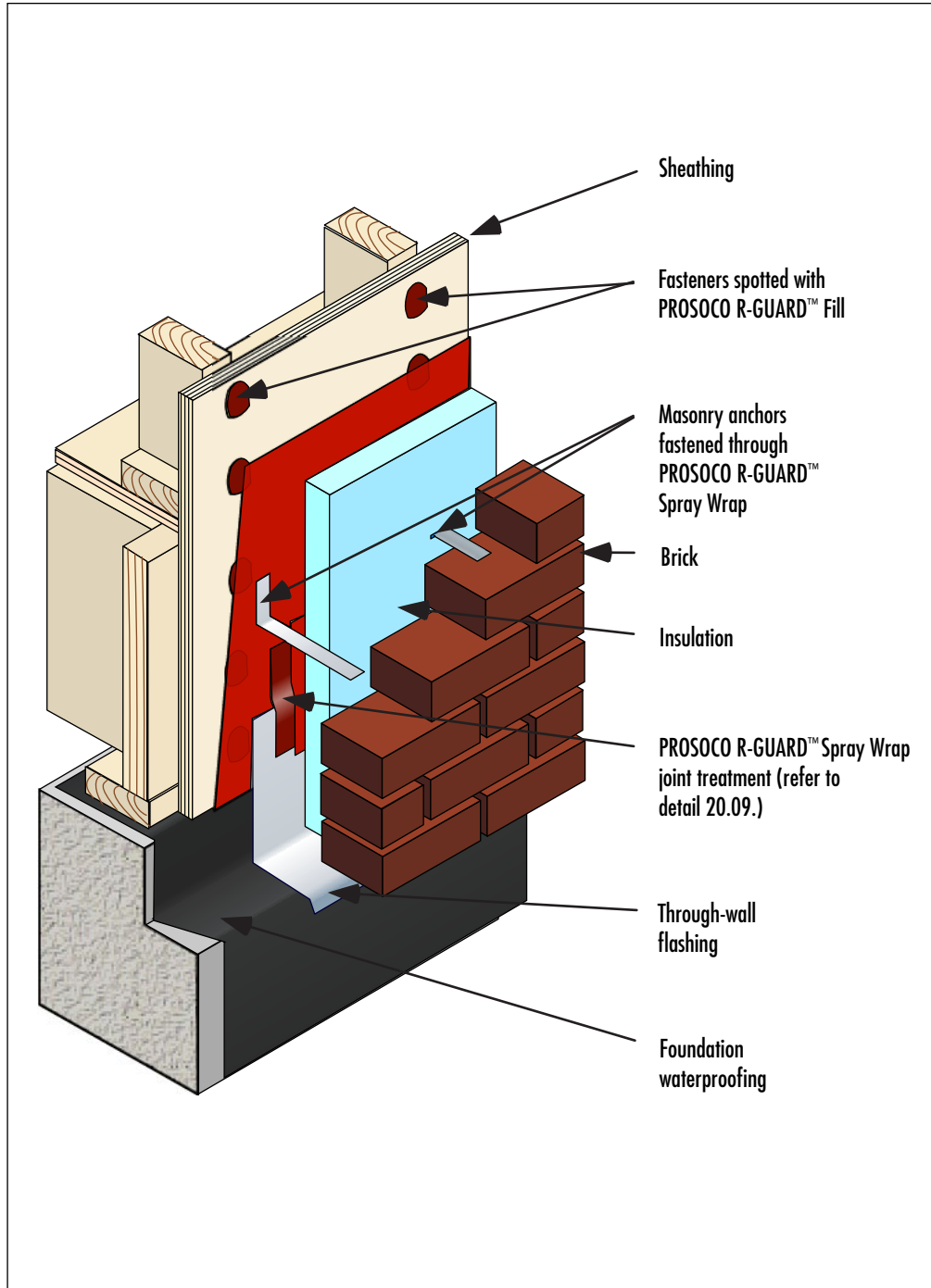


**PROSOCO R-GUARD™ Air & Moisture Barrier**  
**Wood Frame with Brick Veneer**

**Detail No.: 20.00ei**



**Notes:**

- 1] Install PROSOCO R-GUARD™ as per PROSOCO specifications.
- 2] Install flashing. Integrate the flashing with the PROSOCO R-GUARD™ by coating upper edge of flashing with PROSOCO R-GUARD™ Tape & Fill and overcoat with PROSOCO R-GUARD™ Spray Wrap. Refer to PROSOCO Detail 20.09.
- 3] Secure masonry anchors as per manufacturer's specifications. Refer to PROSOCO Detail 20.03 for alternate anchor installation detail.