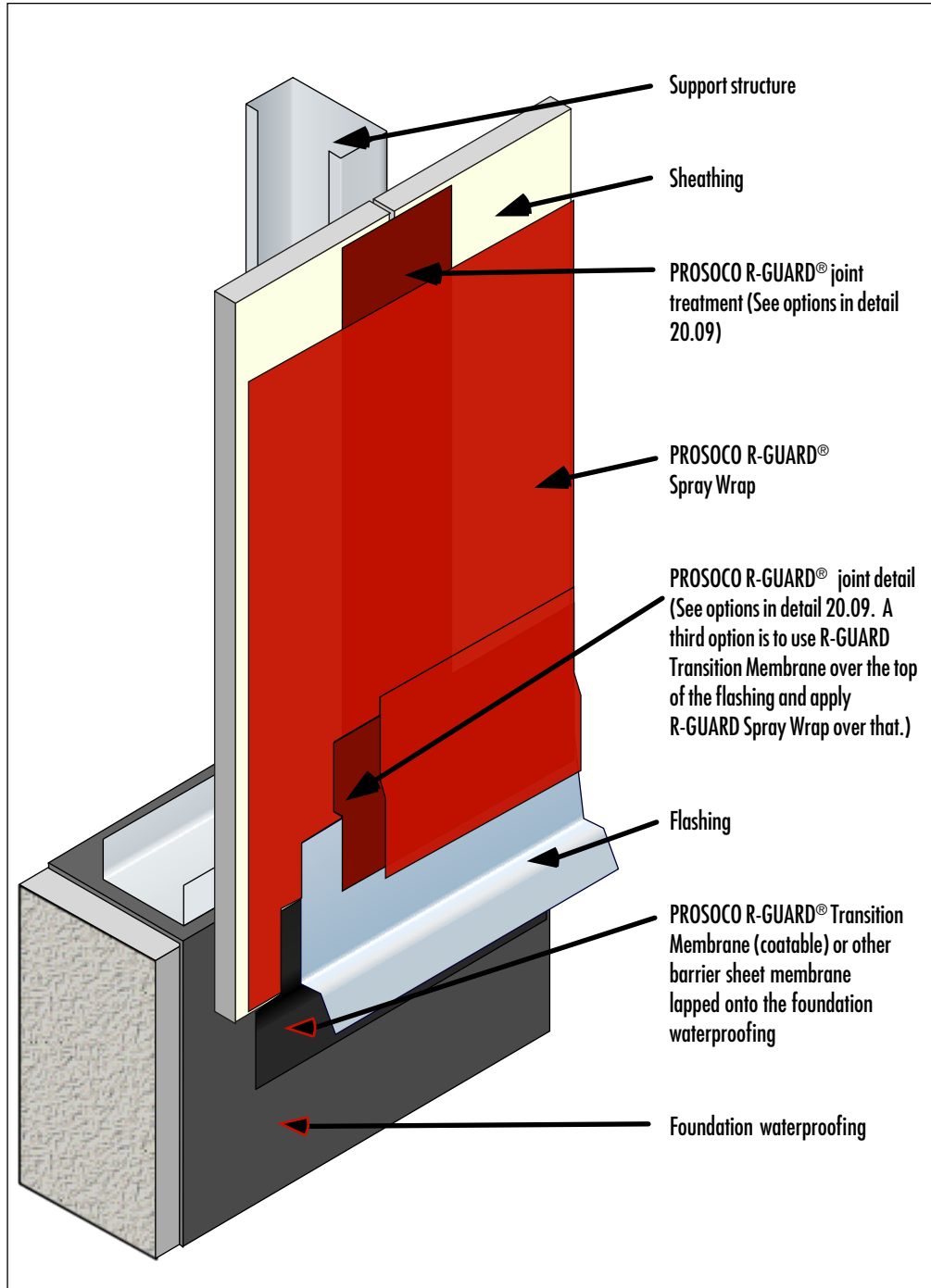


**PROSOCO R-GUARD® Air & Water-Resistive Barrier
Termination at Grade-Sheathing
Overlapping Foundation**

Detail No.: 20.10b



Notes:

1. Protect wall assembly from moisture rising through the concrete foundation.
2. Install suitable self-adhering barrier sheet membrane to transition between PROSOCO R-GUARD® Air & Water-Resistive Barrier and foundation waterproofing.
3. Install flashing to drain liquid water to the exterior of the wall assembly.
4. Install PROSOCO R-GUARD® joint detail to create seamless transition.